

Engine: Isuzu 6WG1XKSC

Rated Power: 300kW

Operation weight: 63,000kg



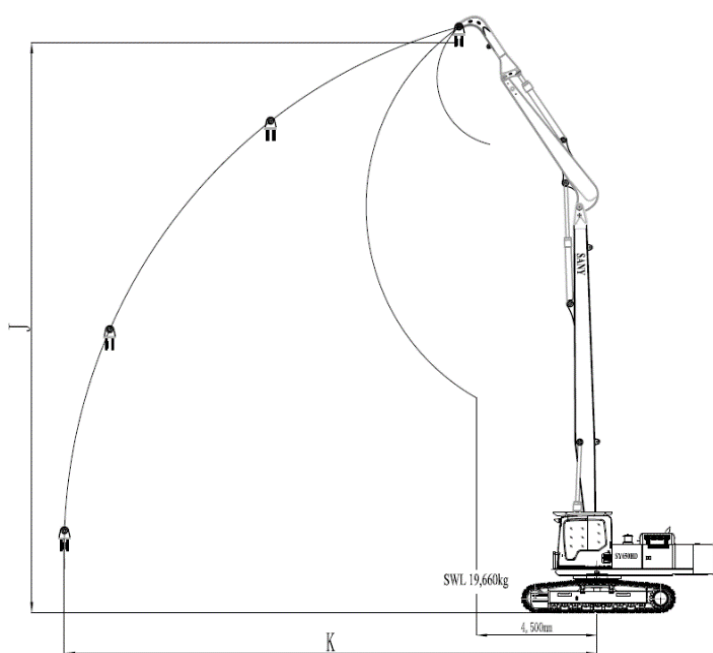
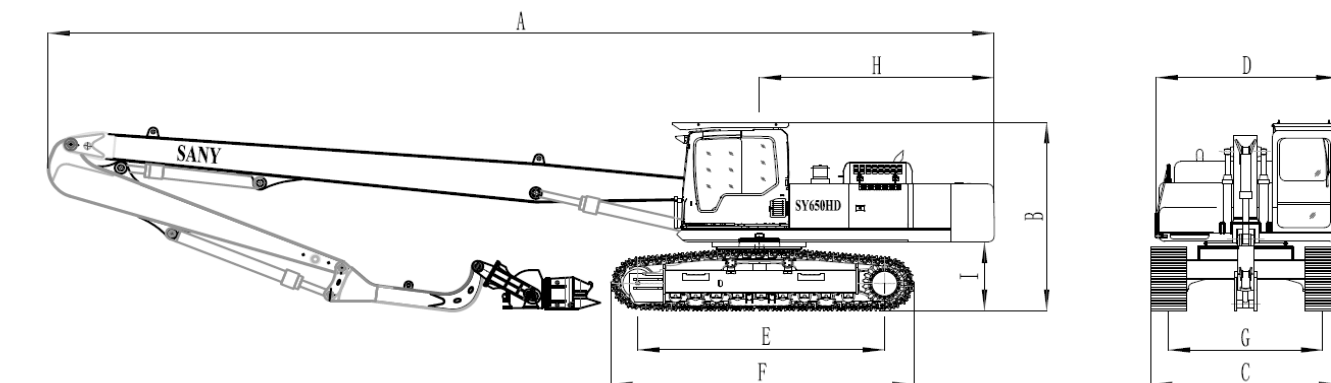
SANY

SY650HD

VIBRO EXCAVATOR



QUALITY CHANGES THE WORLD



Machine Parameters

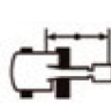
A	Transport length	mm	17,500
B	Transport height	mm	3,470
C	Transport width	mm	3,200
D	Overall width of upper structure	mm	3,290
E	Track length on ground	mm	5,000
F	Length of crawler	mm	5,932
G	Track gauge	mm	2,400/3,700
H	Tail swing radius	mm	4,370
I	Counterweight ground clearance	mm	1,255
J	Max. lifting height(under hook)	mm	21,050
K	Max. lifting reach	mm	19,885
	Engine Rated Power	kW	300
	Main pump flow	l/min	810
	Fuel tank capacity	L	680
	Hydraulic tank capacity	L	480
	Vibro Excitation force	kN	900
	Vibro Frequency	beat/min	2800

SY650HD with 800mm shoes, 12500mm boom, 5500mm arm, 2500mm J-arm

- A: Load radius
 B: Load point height
 C: Lifting capacity rating
 Cf: Rating loads over front
 Cs: Rating loads over side



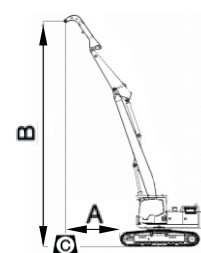
Rate over - front (Cf)



Rate over - side (Cs)

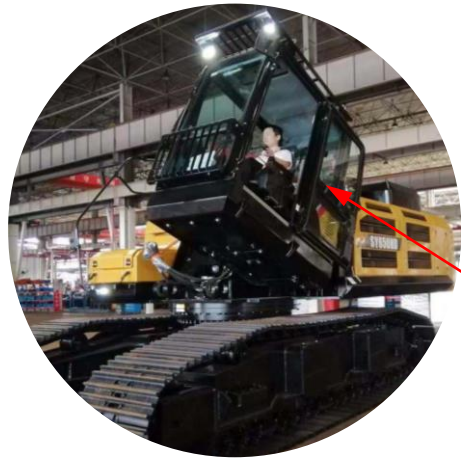
Conditions:

Boom length: 12,500mm
 Arm length: 5,500mm
 J-arm length: 2,500mm
 Counter weight: 12,000kg



B(m)	A(Unit: m)														Max. Reach	
	4.5m		6m		9m		12m		15m		18m					
	Cf	Cs	Cf	Cs	Cf	Cs	Cf	Cs	Cf	Cs	Cf	Cs				
21			7,329	5,887												
18			8,065	6,452	5,355	4,462	4,305	3,444								
15			9,243	7,481	6,162	4,930	4,515	3,612	3,702	2,958						
12			10,525	8,426	7,090	5,703	5,260	4,250	4,210	3,368						
9			12,450	9,805	8,300	6,540	6,200	4,962	4,980	3,884	2,767	2,212				
6	19,660	13,560	14,975	10,778	9,906	7,990	7,458	5,906	5,895	4,700	3,593	2,612				
3			16,658	13,148	11,340	8,872	8,322	6,457	6,350	5,072	4,430	3,044	1,056	878		
Ground level							8,216	6,212	6,214	4,871						
-3							8,206	6,143	6,154	4,865						
-6										6,002	4,802					

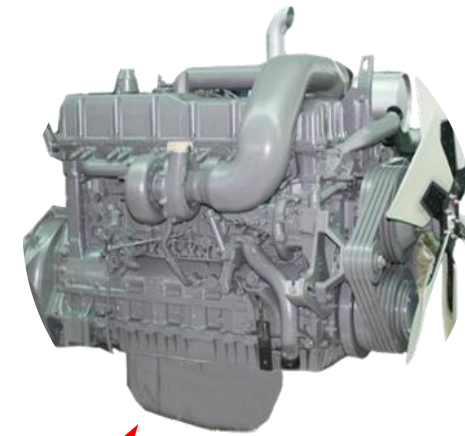
SY650HD Super Excellent Performance



1. Tilt cabinet, more user friendly and safely.



8. Multiple function joystick, much more user friendly and safely to improved productivity.



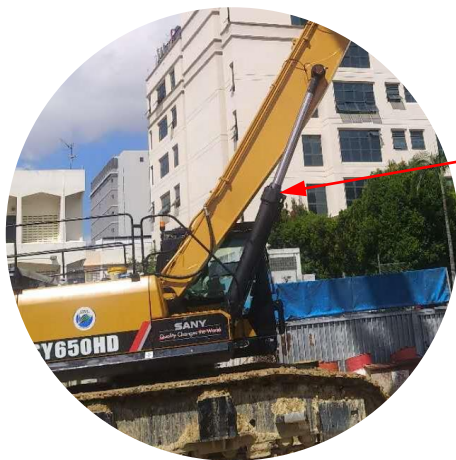
7. Isuzu engine with 300kW, much more powerful and lower fuel consumption.



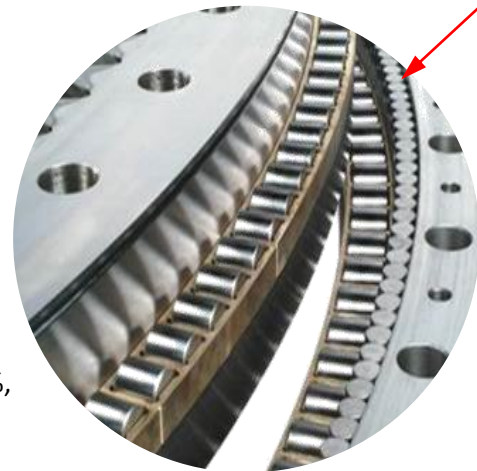
6. Flange type high pressure oil seal designing; Larger pump flow (2x405L/min) enhance the efficiency with Rexroth Hydraulic Pump, much more powerful. Much more precision control for composite control



5. Heavy duty travelling motor, the load resistance coefficient improves 30%.



2. Enlarge cylinder with bore diameter 2x Φ 210mm for enhance the pull-out force.



3. Heavy duty three layers bearing design turn table, the load capacity improves 30%, more durable and reliable.



4. Design with hydraulic extension track gauge and lower chassis GC, much more compact for transport and with super stability and higher safety for operate.