



SY395H

Powerful Machine for Mountain Cutting Value Leader

Brand new change **QUALITY**
CHANGES THE WORLD
Quality changes the world



Selling Points

● Energy Conservation and Environment Protection

Energy Conservation and Environment Protection: With high-power environmental friendly GBIII engine, and precise real-time control of fuel injection, the combustion is more sufficient, and the fuel consumption reduces by 10% as compared with previous generation of same operating efficiency.

● Stable & Reliable

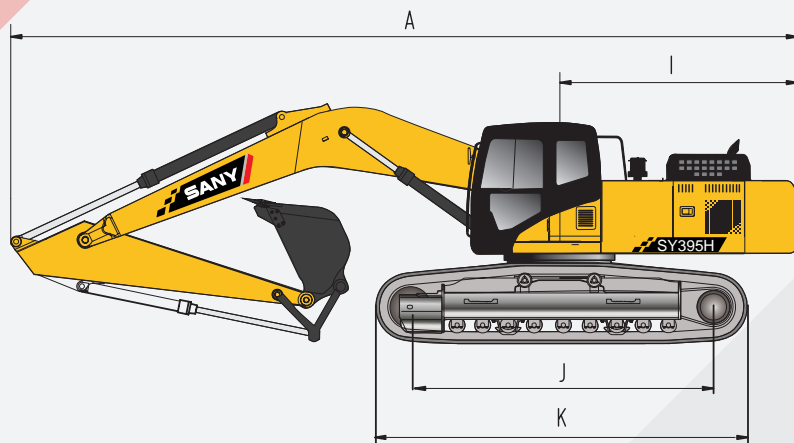
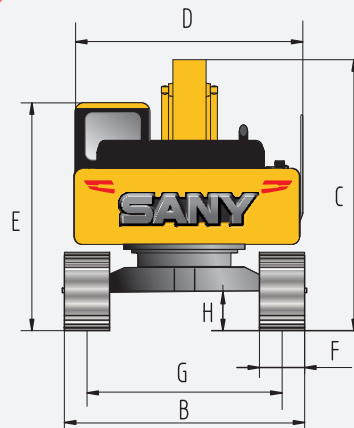
Reinforced working device, wear-resisting bucket, strengthened four wheels & track shoes, quartering hammer pipelines, and comprehensive test & verification system, the complete machine and each component could be covered and the overall performance becomes more stable and reliable.

● Heavy-duty & Efficient

The digging force improves by 10% as compared with previous generation; with heavy duty additional power control, and optimized bucket shape, the heavy-duty operating efficiency is higher.

Overall dimensions (mm)

Standard



| | SY395H |
|---|--------|
| A. Overall length (in transportation state) | 11700 |
| B. Overall width | 3360 |
| C. Overall height (in transportation state) | 3740 |
| D. Upper width | 3265 |
| E. Overall height (cab top) | 3470 |
| F. Width of standard track shoe | 600 |
| G. Track gauge | 2740 |
| H. Minimum ground clearance | 505 |
| I. Slewing radius of tail | 3740 |
| J. Ground contact length of track | 4340 |
| K. Track shoe length | 5320 |

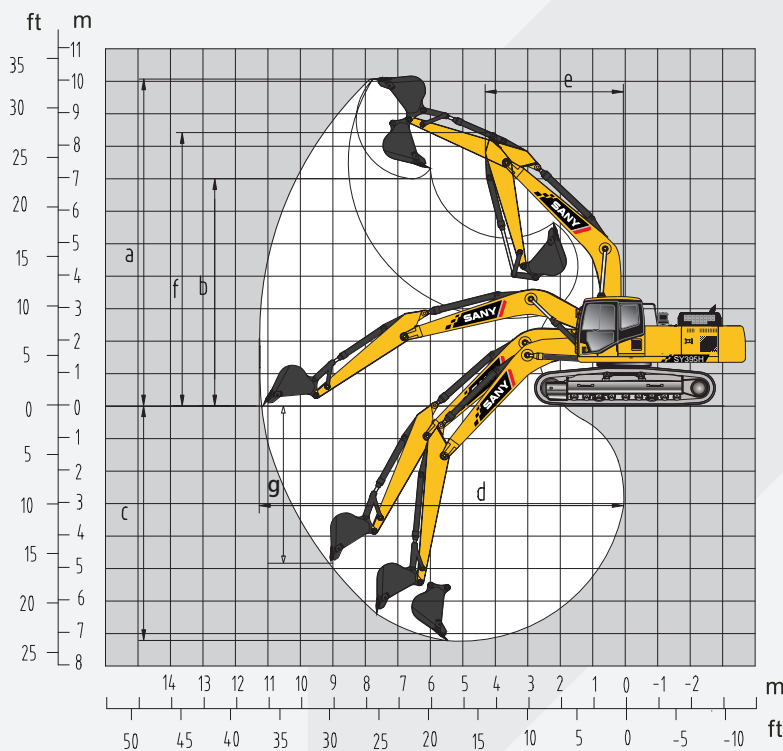
Performance parameters

Standard

| | SY395H |
|----------------------------------|----------|
| Total weight, kg | 40000 |
| Bucket capacity, m ³ | 1.9 |
| Rated power, kW/rpm | 257/2000 |
| Traveling speed (high/low), km/h | 5.3/3.2 |
| Slewing speed, rpm | 8.3 |
| Gradeability | 70%/35° |
| Ground pressure, kPa | 75.3 |
| Digging force of bucket, kN | 247 |
| Digging force of bucket rod, kN | 218 |

Operating range (mm)

Standard



| | SY395H |
|---|--------|
| a. Maximum digging height | 9980 |
| b. Maximum unloading height | 6960 |
| c. Maximum digging depth | 7045 |
| d. Maximum digging distance | 10920 |
| e. Minimum slewing radius | 4750 |
| f. Maximum height at minimum slewing radius | 8785 |
| g. Maximum digging depth with vertical boom | 4710 |

SANY Heavy Machinery Co., Ltd.

SANY Industrial Park, Dongcheng Avenue, Kunshan Economic & Technological Development Zone, Jiangsu Province

Post code: 215300

After-sales service hotline: 4008-28-2318

Consulting & complaint hotline: 4008-87-9318



Note

The documents and technical specification will be changed without further notice due to continuous technical improvement. The machine in the picture might include additional equipment.

ZJSYX0604CH (August, 2017)

Printed in CHINA