

HYDRAULIC EXCAVATOR **SY35U**_{T4f}



SANY
AMERICA INC.

Rated Power (Net)

24.4 hp / 18.2 kW

Operating Weight

8,499 lb / 3855 kg

Dig Depth

10' 2" / 3105 mm

Bucket Breakout

6,834 lbf / 30.4 kN

Performance to fit any application

The Sany SY35U excavator is designed to help you work efficiently while maximizing your jobsite productivity. It has many features to help operators achieve the balance of power, smoothness, fuel efficiency and speed.

You can depend on the SY35U to get the job done right and on time.

SanyLIVE GPS

Machines have the ability to be fitted with the SanyLIVE GPS system to allow fleet managers to monitor machines and proactively react to the needs of the equipment.

Standard Aux Hydraulics

The SY35U comes standard with auxiliary hydraulic lines plumbed down to the arm tip for hydraulic power ready to use.

In-Cab Color Monitor

Intuitive, quick communication of key operating parameters. Ability to easily see information about machine set-up and performance.

Multiple Working Modes

Allow the machine to be easily set up for the job and application at hand.

Reliable First-Class Components

Guarantee easiest and most versatile operation in every working environment.

Undercarriage Components

High quality and durable undercarriage for long life and resistance to wear.



HYDRAULIC EXCAVATOR SY35U **Walk-Around**

Optimized Cabin

For excellent visibility and maximum operator comfort and control.

Work Harder, More Efficiently, and Longer

Equipped with a powerful and efficient Yanmar 3TNV88 Tier 4f engine with a highly engineered hydraulic system to match engine response.

Simplified Service

A key tool for more uptime and reduced cost. Ground level service items aid in quick and easy maintenance.

Outstanding Durability

X-beam design uses a high strength box-section structure for maximum durability and excellent torsion-resistant performance.

Swing Boom

Allows the operator to move the boom 64 deg to the left and 51 deg to the right for operation in tight conditions and minimize jobsite ground disturbance.

Dozer Blade

Equipped standard so that backfilling and finishing operations can be performed easily and efficiently.



Operator comfort to maximize your productivity

Any person in any job performs better when the working conditions are right. The SY35U cabin provides just such an environment for operators. Our design which places operator comfort center stage, ensures that during the work day the focus is on the job.



Comfort and Control Comes Standard

Sany's optimized operator cabin provides all-around visibility and is designed to support the operator's natural range of motion. Spacious leg room and an adjustable seat provide an excellent working environment for increased productivity.

HYDRAULIC EXCAVATOR SY35U OPTIMIZED CABIN

Spacious, ergonomically designed work station with every operator need in mind.

Excellent operator entrance and egress.

Industry-standard, high BTU heating and air conditioning. This highly efficient system allows the operator to make the cab environment one that they can focus on the work.

Quiet operation.

Multiple machine operation modes for maximum productivity.

Exceptional operator visibility.

ISO and SAE control patterns with standard pattern change valves allow the operator to set the machine to their desired settings.

Comfortable operator's seat.

Hydraulic-over-hydraulic pilot system provides smooth feel and precise control.

Low-effort control levers.



The power to get the job done right

The SY35U is equipped with a Yanmar 4TNV88 1.6 liter Tier 4f engine delivering 24.4 hp @ 2000 RPM. Matching engine output to the highest quality hydraulic components allows the independent systems to act as one and maximize fuel efficiency and machine performance.

Engine Performance

Utilizing high-quality engines and hydraulic components, the SY35U performs at the peak of efficiency.

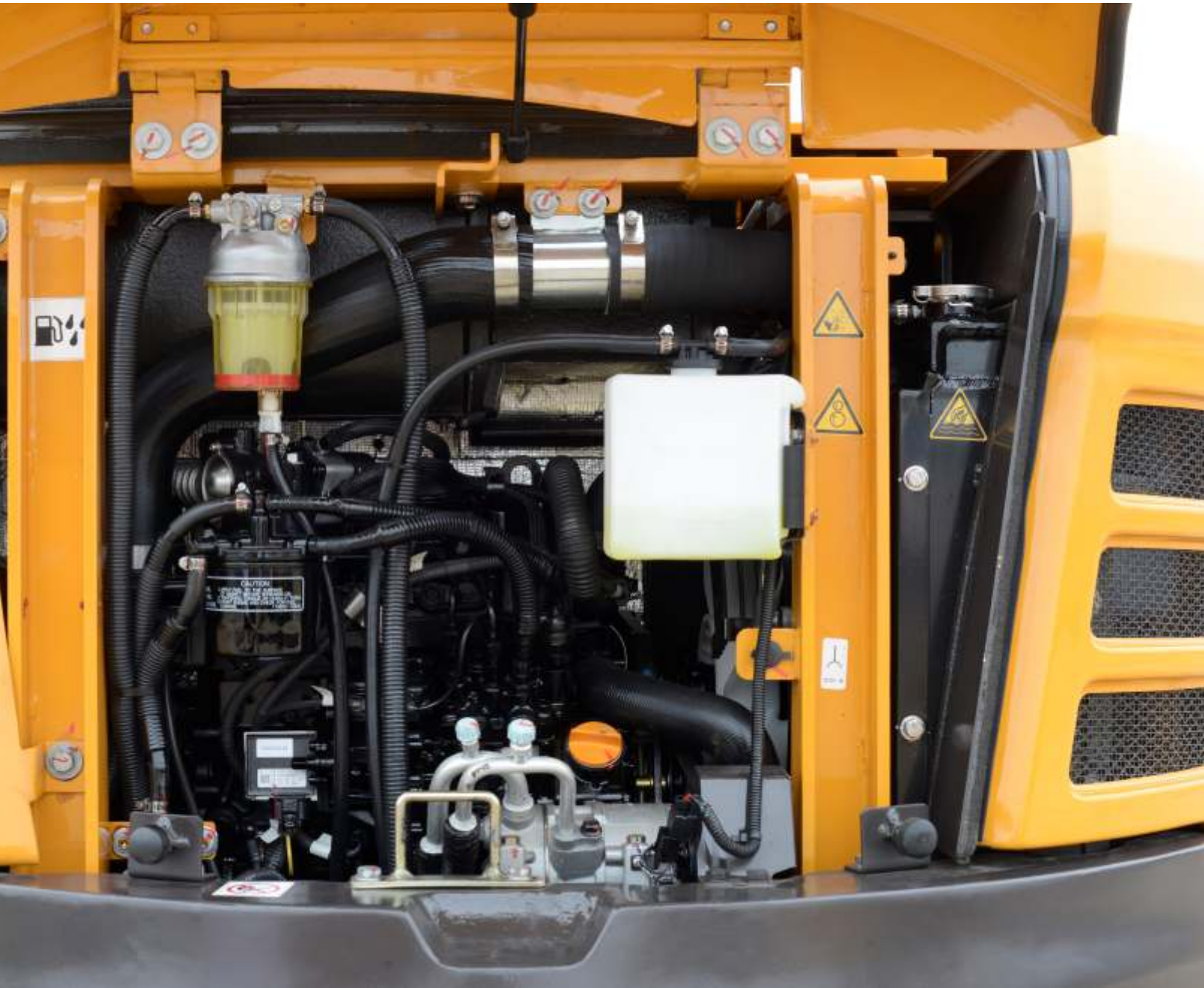
The machine has a highly engineered hydraulic system that reduces fuel consumption and provides an efficient balance of the main pump and engine power.



The cooling system is sized to match the cooling requirements to the power needs of the most demanding operating conditions. It offers an optimized fan drive coupled with a side-by-side cooler to provide the necessary cooling for the engine and hydraulics. The auto-idle system is conveniently turned on or off with the push of a button on the display monitor in the cab. While it is operating, it allows the engine to drop to low idle to reduce waste of fuel when the machine doesn't require the power. When the operator is ready to resume operation, the system quickly reacts and resumes engine operation where it left off. Spin-on fuel water separator and oil filter, air pre-cleaner and dual-element air filtration are standard and easily serviceable.



HYDRAULIC EXCAVATOR SY35U ENGINE



Engine Fuel Filter

Fuel Water Separator

2 Stage Air Filtering System

HYDRAULIC EXCAVATOR SY35U **HYDRAULICS**

Striking the balance of power and speed.

With a finely tuned hydraulic system, the SY35U provides a real-time match of flow to the demand and engine power available. You can be certain that the machine will operate at the peak of efficiency.



Hydraulic Features

Excellent feathering-touch with work tools and fine grading through a load sensing hydraulic system. Precise control in lifting applications. Smooth use of power during digging. High torque swing reduction provides quick cycle times and precise movements of the upper structure.

The high output variable displacement axial piston pump delivers 23 gallons per minute of flow to provide the hydraulic horsepower necessary to get the work done.

Additional Hydraulic Function is the New Standard

Responsive two-way auxiliary hydraulics are standard. Full power is available for high productivity and precise control. Pre-plumbed with hard lines to the end of the arm for ready-to-go, work tool connection.

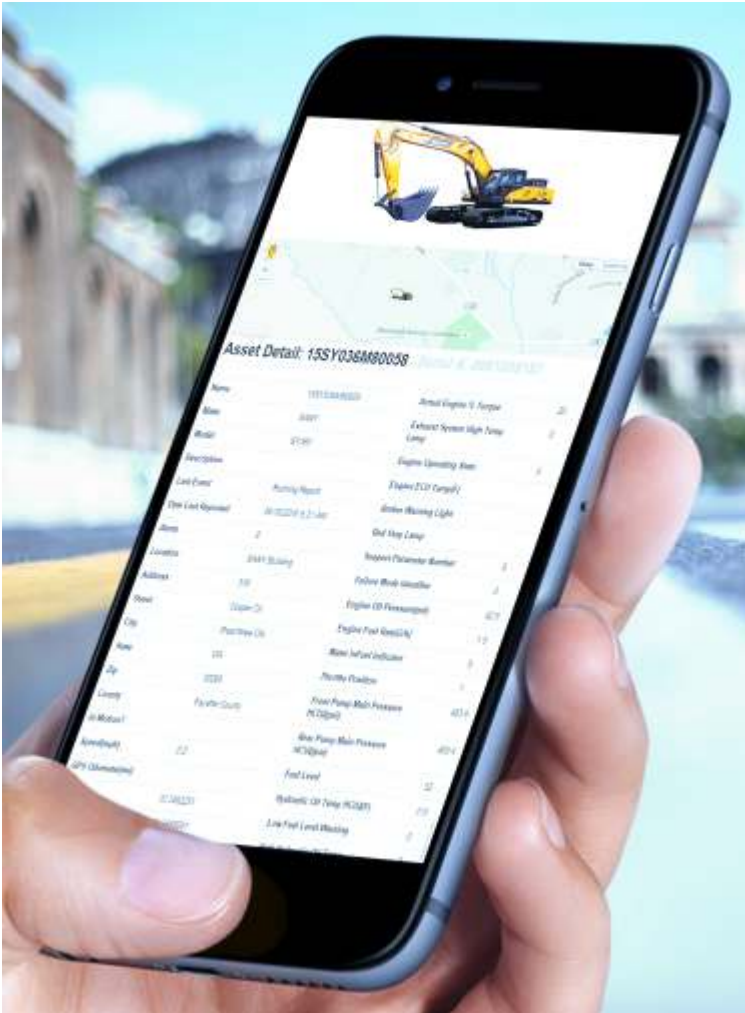


A pattern change valve is standard on the machines.



Connect and manage your machines

With SanyLIVE, it's easy to follow and manage your fleet. The system can be accessed from a website or right from your smartphone or tablet so you can get real time information on your machines no matter where you are.



State-of-the-art fleet management tools.
Understand and track machine utilization.
Schedule machine maintenance before it is due.
Free IOS and Android apps.
Geo-fencing capability.
Compatible with other systems.
Monitor your fuel usage to understand real time operating costs. *

*Items designated with * are available only on some models*

HYDRAULIC EXCAVATOR SY35U GPS



You can be notified of the regular service needs of your equipment with the automated messaging system.

Machine location and alerts can be seen and filtered so that you can focus on the machines that need attention.

Alerts are sent to allow proactive and early scheduling of fuel trucks, regular maintenance and other service items to allow your operators to keep working and keep utilization rates high and downtime low.

The system allows real-time monitoring of machine operating performance. *



HYDRAULIC EXCAVATOR SY35U MACHINE SPECIFICATIONS

ENGINE

| | |
|-------------------|--------------------------------|
| Engine Type | Yanmar 3TNV88 Tier 4 final |
| Max Power (Net) | 27.3 hp (20.4 kW) @ 2200 RPM |
| Rated Power (Net) | 24.4 hp (18.2 kW) @ 2000 RPM |
| Max Torque | 69.3 lb-ft (94 N-m) @ 1200 RPM |
| No. of Cylinders | 3 |
| Displacement | 98 in ³ (1.6 liter) |
| Max RPM | 2200 RPM |
| Idle RPM | 1400 RPM |
| Auto-Idle RPM | 1400 RPM |
| Bore | 3.5 (88 mm) |
| Stroke | 3.5" (90 mm) |
| Aspiration | Naturally Aspirated |
| Fan Drive Type | Direct belt driven |

CABIN

| | |
|-------------|---|
| Type | Sealed and pressurized |
| Seat Belt | 2" (50.8 mm) |
| Radio Type | AM/FM with 2 speakers |
| Ventilation | Forced air heating and air conditioning with automatic controls |

UNDERCARRIAGE

| | |
|--|----------------|
| Track Pitch | 1.7" (43.2 mm) |
| No. of Carrier Rollers - Upper (each side) | 1 |
| No. of Track Rollers - Lower (each side) | 4 |
| Shoe Width (standard) | 12" (300 mm) |

HYDRAULIC SYSTEM

| | |
|---------------------|----------------------|
| Main Pump Max. Flow | 23 gpm (88 L) |
| Pump Control Type | Load Sensing |
| Main Relief | 3,553 psi (24.5 MPa) |
| Travel Relief | 3,553 psi (24.5 MPa) |
| Swing Relief | 3,553 psi (24.5 MPa) |
| Pilot Relief | 500 psi (3.4 MPa) |
| Boom Cylinder | |
| No. of Cylinders | 1 |
| Bore | 3.3" (85 mm) |
| Rod | 1.8" (45 mm) |
| Stroke | 19.7" (500 mm) |
| Arm Cylinder | |
| No. of Cylinders | 1 |
| Bore | 3.0" (75 mm) |
| Rod | 1.8" (45 mm) |
| Stroke | 23.1" (588 mm) |
| Bucket Cylinder | |
| No. of Cylinders | 1 |
| Bore | 2.5" (63 mm) |
| Rod | 1.6" (40 mm) |
| Stroke | 21.2" (538 mm) |
| Blade Cylinder | |
| No. of Cylinders | 1 |
| Bore | 3.3" (85 mm) |
| Rod | 1.8" (45 mm) |
| Stroke | 6.3" (160 mm) |

ELECTRICAL

| | |
|----------------|-------------|
| Batteries | 1 x 12V |
| Starting Motor | 1.7 kW |
| Alternator | 40 A / 12 V |

DRIVELINE

| | |
|---------------------------|--|
| Type | Two-position axial piston with planetary reduction |
| Travel Brakes | Multi-disc, spring-applied, hydraulically released |
| Travel Speed - High Speed | 2.7 mph (4.4 km/h) |
| Travel Speed - Low Speed | 1.5 mph (2.4 km/h) |
| Tractive Effort | 8,273 lbf (36.8 kN) |

SWING SYSTEM

| | |
|-----------------|--|
| Type | Axial piston swing motor with planetary reduction |
| Brake Type | Multi-disc, spring-applied, hydraulically released |
| Max Swing Speed | 9 RPM |

REFILL CAPACITIES

| | |
|----------------|-----------------|
| Fuel Tank | 10.6 gal (40 L) |
| Cooling System | 1.7 gal (6.5 L) |
| Engine Oil | 1.8 gal (6.7 L) |
| Hydraulic Tank | 10.6 gal (40 L) |

WEIGHT

| | |
|-------------------------------------|--------------------|
| Operating Weight | 8,333 lb (3780 kg) |
| Ground Pressure with Standard Shoes | 4.6 psi (32 kPa) |

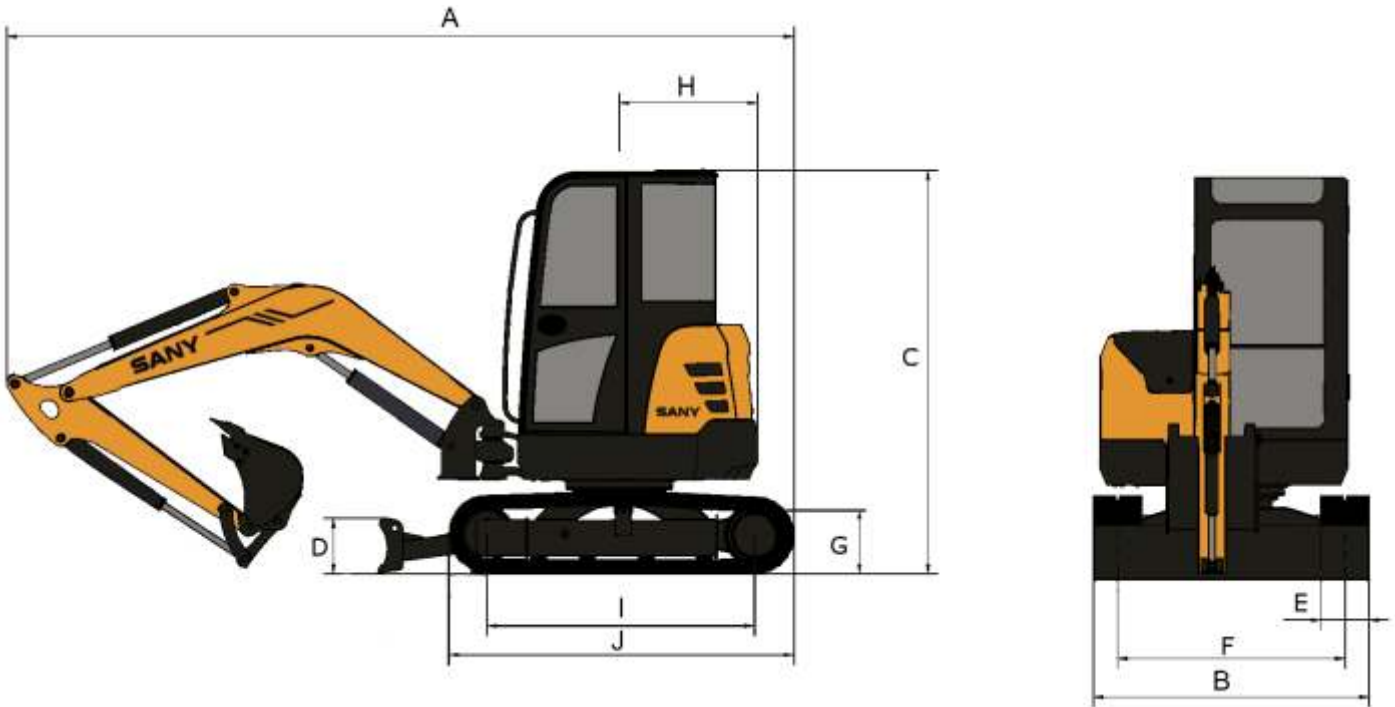
OPERATING CONDITIONS

| | |
|-------------------------------|----------------|
| Minimum Operation Temperature | -4 °F (-20 °C) |
| Maximum Operating Temperature | 120 °F (50 °C) |

PERFORMANCE

| | |
|------------------------------|----------------------------|
| Maximum Arm Digging Force | 4,092 lbf (18.2 kN) |
| Maximum Bucket Digging Force | 6,834 lbf (30.4 kN) |
| Boom Swing Angle | 51 deg Right / 64 deg Left |

HYDRAULIC EXCAVATOR SY35U MACHINE DIMENSIONS



OVERALL DIMENSIONS

| | |
|-----------------------------|------------------|
| A. Transport Length | 16' 2" (4915 mm) |
| B. Transport Width | 5' 8" (1720 mm) |
| C. Transport Height | 8' 3" (2515 mm) |
| D. Blade Height | 1' 2" (350 mm) |
| E. Track Width (standard) | 1' 0" (300 mm) |
| F. Track Gauge | 4' 8" (1420 mm) |
| G. Minimum Ground Clearance | 1' 0" (295 mm) |
| H. Tail Swing Radius | 2' 10" (860mm) |
| I. Track Ground Length | 5' 6" (1670 mm) |
| J. Track Length | 7' 1" (2155 mm) |
| Boom Length | 8' 4" (2540 mm) |
| Arm Length (standard) | 4' 7" (1400 mm) |

HYDRAULIC EXCAVATOR SY35U **QUALITY**

Quality is not a goal, it's our commitment.

The structural components and work equipment of the SY35U are built Sany-strong, meaning that the fabrications are designed taking into account the most difficult and demanding operator needs and jobsite requirements.



Extensive testing and analysis ensure the structures will have the durability expected and that we deliver a machine that is ready for work in even the most demanding of environments. With the emphasis on reducing stress points, both the boom and arm go through rigorous fatigue and field-testing.



The highest quality suppliers and components are designed to function together as one unit. Marrying these quality components together means less machine downtime and that means adding more value to your bottom line.



Because Sany is one of the world's largest manufacturers of hydraulic excavators, you can be sure that our machines have been exposed to a variety of applications. At Sany, our excavators have seen it before and have had advancements made to be prepared for any job required.

Reliability that stacks up against any competition.

Productivity allowing more work to get done with less operating cost.

North American research and development team with focus on quality.



Designed to maximize your protection

Sany excavators are designed around safe operation and maintenance of the machine. The design of the cab entrance allows for easy entry into and exit from the machine. Railings are located to aid in providing convenient entry and egress from the cabin. The comfortable operator compartment allows the operator to be positioned so that he can control the machine effectively and safely. The display warns the operator of items such as fluid temperatures needing attention so that any issues can be addressed on the spot.

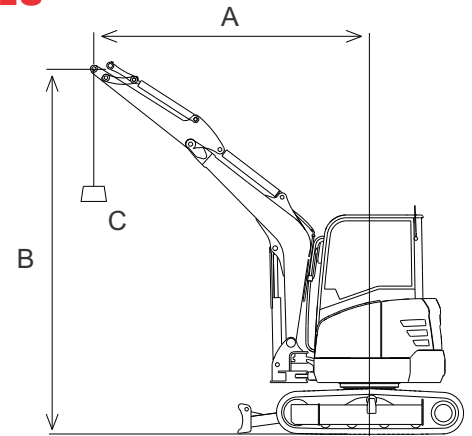


Quiet operation is key to long hours of work. The SY35U is equipped with a quiet cabin environment to ensure that operators can work all day every day they are in the machine. The machines are equipped with standard emergency stop switches as well as other features to aid operators in safe and efficient operation of the machine. The responsive low-effort hydraulic controls ensure the machine responds to the operator's demands in the most smooth and consistent way. A battery disconnect allows you to disconnect the machine from the main battery power supply when maintaining or storing the machine. The SY35U is designed to aid in smooth and safe operation and maintenance.

HYDRAULIC EXCAVATOR SY35U LIFTING CAPACITIES

SY35U ONE PIECE BOOM

- A: Load radius
- B: Load point height
- C: Lifting capacity



Notes:

1. Ratings are based on ISO 10567.
2. Lift capacity of the SY35U Series does not exceed 75% of tipping load with the machine on firm, level ground or 87% full hydraulic capacity not including the use of power boost.
3. The load point is the centerline of the bucket pivot mounting pin on the arm.
4. *Indicates load limited by hydraulic capacity.
5. 0 m = Ground level.



Rating over-front



Rating over-side or 360 degrees

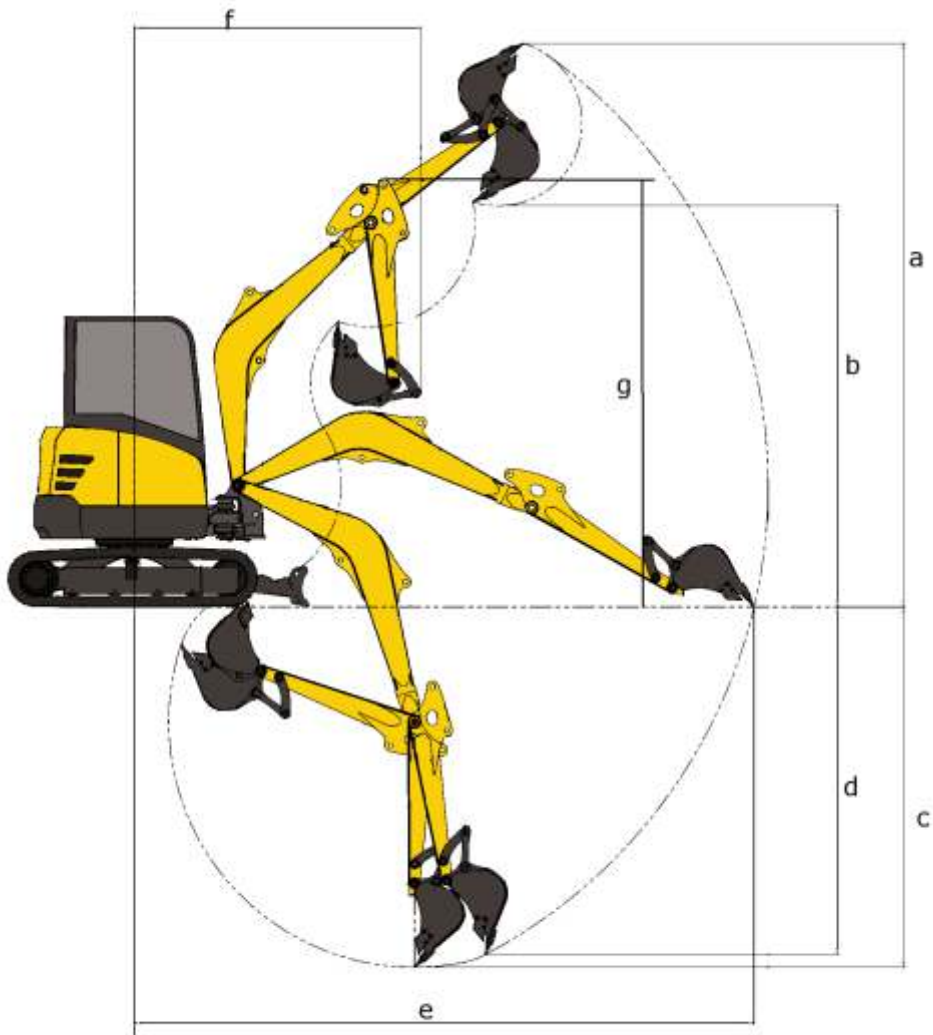
Units: lb
kg

LIFTING CAPACITIES

| Load point height | Load radius - Blade off the ground | | | | | | At max. reach | | |
|-------------------|------------------------------------|---------------------------------|-------------------|---------------------------------|-------------------|---------------------------------|---------------|------------|--------------|
| | 6.5 ft (2.0 m) | | 9.8 ft (3.0 m) | | 13.1 ft (4.0 m) | | lb | kg | feet (meter) |
| | Rating over-front | Rating over-side or 360 degrees | Rating over-front | Rating over-side or 360 degrees | Rating over-front | Rating over-side or 360 degrees | | | |
| 13.1 ft (4.0 m) | lb | | | | | | 1549 (704) | 1452 (660) | 11.1 (3.4) |
| 9.8 ft (3.0 m) | | | | | 1175 (534) | 1107 (503) | 1069 (486) | 1008 (458) | 13.8 (4.2) |
| 6.5 ft (2.0 m) | | | 1797 (817) | 1676 (762) | 1148 (522) | 1080 (491) | 904 (411) | 849 (386) | 15.1 (4.6) |
| 3.3 ft (1.0 m) | | | 1661 (755) | 1547 (703) | 1098 (499) | 1030 (468) | 851 (387) | 801 (364) | 15.4 (4.7) |
| 0 ft (0 m) | | | 1584 (720) | 1472 (669) | 1060 (482) | 994 (452) | 876 (398) | 816 (371) | 15.1 (4.6) |
| - 3.3 ft (-1.0 m) | 3029 (1377) | 2739 (1245) | 1577 (717) | 1463 (665) | 1060 (482) | 992 (451) | 1010 (459) | 948 (430) | 13.8 (4.2) |
| - 6.5 ft (-2.0 m) | 3131 (1423) | 2831 (1287) | 1635 (743) | 1520 (691) | | | 1463 (665) | 1364 (620) | 10.8 (3.3) |

| Load point height | Load radius - Blade on the ground | | | | | | At max. reach | | |
|-------------------|-----------------------------------|---------------------------------|-------------------|---------------------------------|-------------------|---------------------------------|---------------|------------|--------------|
| | 6.5 ft (2.0 m) | | 9.8 ft (3.0 m) | | 13.1 ft (4.0 m) | | lb | kg | feet (meter) |
| | Rating over-front | Rating over-side or 360 degrees | Rating over-front | Rating over-side or 360 degrees | Rating over-front | Rating over-side or 360 degrees | | | |
| 13.1 ft (4.0 m) | lb | | | | | | *1767 (803) | 1452 (660) | 11.1 (3.4) |
| 9.8 ft (3.0 m) | | | | | *1800 (818) | 1107 (503) | *1514 (688) | 1008 (458) | 13.8 (4.2) |
| 6.5 ft (2.0 m) | | | *2200 (1000) | 1676 (762) | *1881 (855) | 1080 (491) | *1467 (667) | 849 (386) | 15.1 (4.6) |
| 3.3 ft (1.0 m) | | | *3183 (1447) | 1547 (703) | *2279 (1036) | 1030 (468) | *1529 (695) | 801 (364) | 15.4 (4.7) |
| 0 ft (0 m) | | | *3630 (1650) | 1472 (669) | *2501 (1137) | 994 (452) | *1731 (787) | 816 (371) | 15.1 (4.6) |
| - 3.3 ft (-1.0 m) | *5218 (2372) | *2745 (1245) | *3588 (1631) | 1463 (665) | *2380 (1082) | 992 (451) | *2198 (999) | 948 (431) | 13.8 (4.2) |
| - 6.5 ft (-2.0 m) | *4525 (2057) | *2837 (1287) | *2677 (1217) | 1520 (691) | | | *2251 (1051) | 1364 (620) | 10.8 (3.3) |

HYDRAULIC EXCAVATOR SY35U **WORKING RANGE**



WORKING RANGE

| | | |
|---|--|-------------------|
| a | Maximum Digging Height | 15' 11" (4855 mm) |
| b | Maximum Dumping Height | 11' 4" (3460 mm) |
| c | Maximum Digging Depth | 10' 2" (3105 mm) |
| d | Maximum Vertical Wall Digging Depth | 8' 10" (2700 mm) |
| e | Maximum Digging Reach | 17' 11" (5465 mm) |
| f | Minimum Swing Radius | 8' 1" (2475 mm) |
| g | Maximum Height at Minimum Swing Radius | 12' 1" (3685 mm) |

HYDRAULIC EXCAVATOR SY35U **SANY GROUP OVERVIEW**

A History Worth Noting



The Sany Group was founded in 1989 as a small fabrication shop. Today, it is the largest construction machinery corporation in China and one of the largest globally. Two of its member companies are listed on separate stock exchanges; Sany Heavy Industry Co., Ltd. on the Shanghai Stock Exchange and SANYHE International Holdings Co., Ltd. on the Hong Kong Exchange. It is also listed among the world's top 500 companies in the construction machinery industry.

Sany is the leading brand in China for concrete pumping machinery, excavators, cranes, rotary drilling rigs and coal mining machinery.

Sany has state-of-the-art technology development centers and post-doctoral research centers across the globe. The Sany Group has applied for over 7,500 patents, with over 5,000 patents already authorized. With these, the Sany Group ranks among the highest in the industry in terms of filed and granted patents.

While constantly working to improve its product quality, the Sany Group is also committed to providing comprehensive and world-class customer service with 15 logistics and parts distribution centers worldwide.

The Sany Group sells and distributes equipment globally to countries in every region of the world.

With its unique advantages, Sany continues to strive to help build a better world.

Sany America Product Line-Up

Through a large network of dealers with outlets across the United States, Canada, Mexico and Central America, Sany America sells and supports earthmoving, lifting, port and road equipment.

Focus on North America

Incorporated in 2006, Sany America is headquartered in Peachtree City, Georgia, where its facility opened in September 2011. The facility includes 340,000 sq. ft. (31,587 m²) of manufacturing space and 60,000 sq. ft. (5,574 m²) of office space on 228 acres of land.

Besides sales, Sany America also supports in-house engineering, marketing, parts, technical publications and service operations with a parts warehouse and a staff of service technicians.

Sany America also hosts test and customer events periodically on-site to evaluate and promote its product's performance, quality and productivity.

Sany America has assembly operations in Peachtree City where machines are assembled, tested and prepared for shipping to the North American market.

The investment in the property, facility and its people, as well as the close partnership with its dealer network, shows that Sany America is committed to the North American market and dedicated to its success here.



HYDRAULIC EXCAVATOR SY35U **CUSTOMER SUPPORT**

Service and support to be there when you need it

Sany America is committed to providing its customers with superior service through our strong dealer network offering first class customer support for all of our products.

Sany America's service support team is specialized in troubleshooting issues and our staff will do what it takes to resolve your concerns.

Our parts warehouse and distribution center in Atlanta, GA, is fully capable of serving the North American market.



Oil Analysis Program

Sany America's oil analysis program helps you to detect and proactively understand machine issues before they happen. By utilizing this powerful system, you can identify potential problems and react before they require extensive repair and downtime. This program not only allows the sampling of hydraulic oil, but also all machine fluids for early detection of possible failures. It's all about knowing your machine's health and reacting before you have an issue that you can't plan for.

Sany Technician Service Training Program

At Sany, we value our investment and yours. That's why our intensive training program will provide your company with training on all of the skills necessary to keep your team informed and help keep your investment in optimal condition.



Technical Manuals

American-written Safety, Operation & Maintenance manuals with matching Maintenance Logs for record keeping is provided with each unit.

HYDRAULIC EXCAVATOR SY35U

STANDARD AND OPTIONAL EQUIPMENT

ENGINE

- Mode control (S and B)
- Starter motor 1.7 kW
- Alternator 12V/40A
- Dry double-filtering air cleaner
- Spin-on engine oil filter
- Engine oil cooler
- Radiator with protective screen
- Auxiliary water tank for radiator
- Fan guard
- Fuel filter with water separator
- High pressure inline secondary fuel filter
- Automatic idle system
- Electronic fuel pump
- Electronic engine control
- 250-hour engine oil-change interval

OPERATOR STATION

- Low noise, steel-structured cabin
- Four rubber damping isolators for support
- Openable upper front and left windows
- Rear window, escape exit
- Window wiper with washer
- Adjustable inclined seat with adjustable armrest
- AM-FM radio with digital clock
- Foot rest and floor mat
- Two speakers
- Rear view mirror
- Seat belt
- Interior cab light
- Hydraulic lockout control
- Fully automatic heater and air-conditioner
- 12V socket
- Recirculation and fresh air filtration for HVAC
- GPS optional

HYDRAULIC SYSTEM

- Two work modes for hydraulic efficiency
- Control valve with main relief valve
- Oil suction filter
- Oil return filter
- Pilot filter
- Aux hydraulics with pedal control
- Control pattern change valve

UNDERCARRIAGE

- Travel brake
- Travel motor guard
- Easily adjustable track tensioner
- Bolted sprocket
- Carrier roller and track roller
- Under cover plate for service and protection
- 300 mm rubber track standard
- 300 mm steel track optional

UPPER STRUCTURE

- Fuel level float
- Hydraulic oil level gauge
- Rear view mirror
- Swing brake
- Counterweight
- Lockable engine hood
- Lockable fuel filler cap

FRONT WORK EQUIPMENT

- Auxiliary piping standard
- Dozer Blade
- Welded H-link
- 8'4" fully-welded box boom
- 4'7" fully-welded box arm

ELECTRICAL

- Engine warning indicator
- Engine coolant temperature
- Fuel tank level gauge
- Fuel low level warning
- High voltage warning
- Engine over speed
- Auto-idle engine warm-up
- Hi/Lo travel speed
- Fully adjustable engine RPM
- 2 standard exterior work lights
- Hour meter
- Adjustable clock for all time zones
- Full color LCD monitor panel
- 12 V Battery
- Battery disconnect switch

Quality Changes the World

Sany America, Inc.
318 Cooper Circle
Peachtree City, GA 30269
Tel: 678-251-2810
E-mail: sales@sanyamerica.com
www.sanyamerica.com

Due to continuous technological innovations, no further notice will be issued for future changes in materials and technical specifications. Optional parts or components could be included in pictures.



SANY
AMERICA INC.

B10-09162015